

024866
 RECEIVED
 LARAMIE COUNTY
 CHEYENNE, WY.

'87 MAR 6 AM 10 04

CERTIFIED LAND CORNER RECORDATION

DESCRIPTION OF CORNER EVIDENCE FOUND, AND ORIGINAL RECORD (If known)

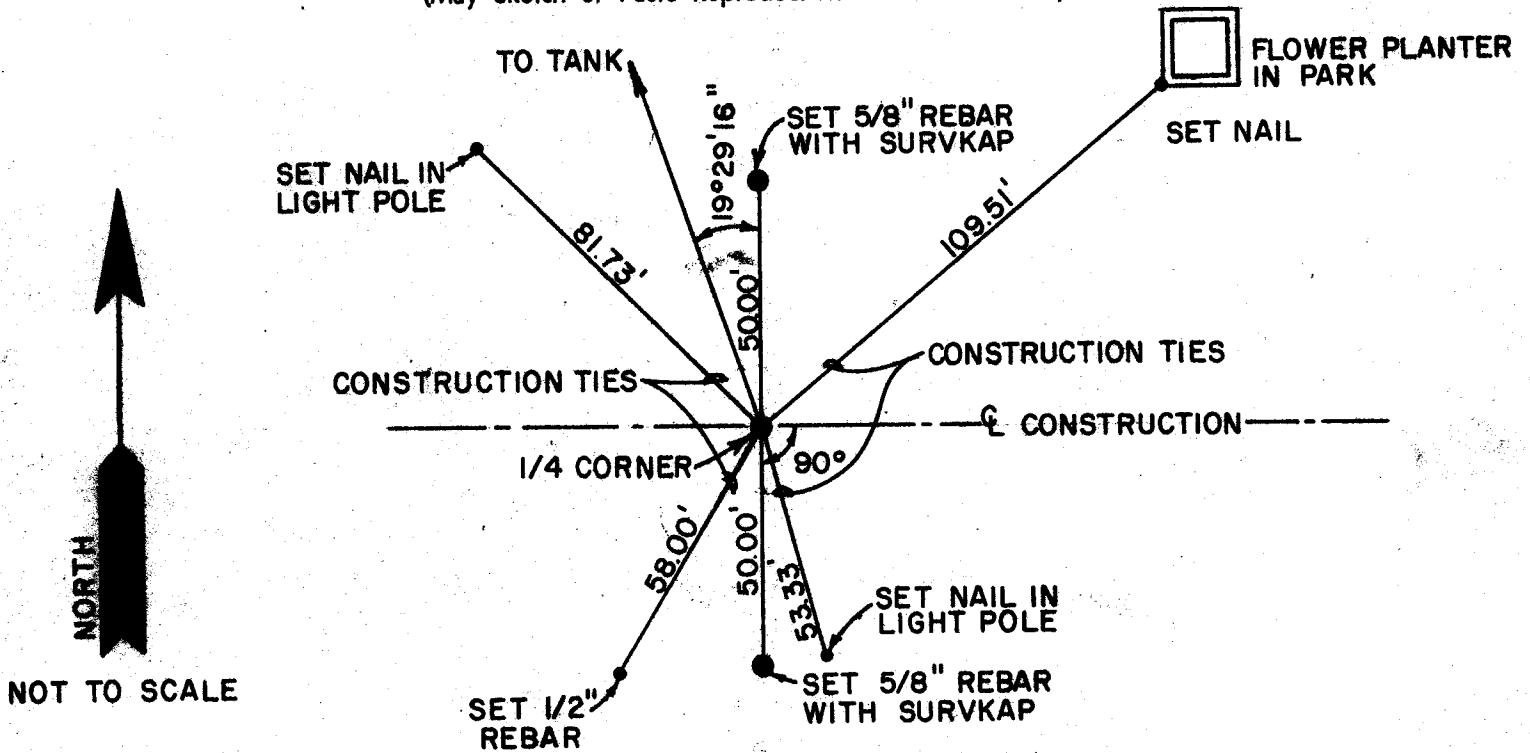
During reconstruction of Pershing Boulevard, an A.V.I. survey crew found the 1/4 Corner Monument for Section 28 and 33. This corner was tied out and removed to facilitate construction. See construction ties below.

DESCRIPTION OF MONUMENT AND ACCESSORIES ESTABLISHED TO PERPETUATE THE ORIGINAL LOCATION OF THIS CORNER:

During paving, I reset 1/4 corner with a 3" Brasscap in the concrete pavement, reset 1/2 inch. See detail as to how cap is stamped. See ties below.

1/4
 SEC. COR
 SEC. 28
 T. 14 N., R. 66 W.
 SEC. 33
 LS 3515

SKETCH, WITH COURSE AND DISTANCE TO ADJACENT CORNER IF DETERMINED IN THIS SURVEY.
 (May Sketch or Paste Reproduction on Reverse Side.)



I, Jeffrey D. Youngquist certify that I have carefully performed or reviewed the work done on the diagrammed corner as reported on this recordation form and approve the same.

Jeffrey D. Youngquist
 Signature of Surveyor

3515
 Registration No.

STATE OF WYOMING,
 Office of Clerk and Recorder,
 County of Laramie

This "corner record" was filed for record on the 6th day of March, 1987, was noted on the cross-index plat and is assigned page No. _____, in book No. _____

Frank C. Whitfield
 County Official

| | | | |
|-----------------------------|--------------|--------------|------|
| Cross Index No. <u>V-11</u> | T. <u>14</u> | R. <u>66</u> | Mer. |
| _____ | T. _____ | R. _____ | Mer. |
| _____ | T. _____ | R. _____ | Mer. |
| _____ | T. _____ | R. _____ | Mer. |
| _____ | T. _____ | R. _____ | Mer. |
| _____ | T. _____ | R. _____ | Mer. |
| _____ | T. _____ | R. _____ | Mer. |

BOOK 1242

V-11 14-66